



# Estelle



*Estelle is a Venue Experience focused on Hospitality, located one mile from Downtown Nashville, east of the Cumberland River.*

The Architecture and design of Estelle reflect the humble, pioneering spirit that defines Nashville's history, while the modern amenities enhance the venue and each individual experience. The main event space, a historic log cabin from 1807, is surrounded by a Victorian home built in 1826. These two historic beauties seamlessly marry to create an architectural backdrop that's unlike any other in Nashville.

The elevated design of Estelle's furnishings imbeds the home with a contemporary style, making the space feel authentic while exuding a modern flare. Our hospitality focused venue offers the event space, rentals, catering and beverage service for any event type. This extension of hospitality allows us the opportunity to ensure that every guest has an unforgettable experience.





## *The Space*

### FRONT PORCH & GARDEN

Estelle guests are welcomed by our Front Porch and Garden. Upon entry, this private greenspace offers an opportunity to enjoy the lush landscaping, while its wide-open layout allows for endless potential. The Garden is the ideal backdrop to give your event a natural appeal in an urban setting. Access to the garden is just a few steps off Woodland and this raised elevation makes Estelle a hidden gem.

### THE DRAWING ROOM

Built in 1807, the Drawing Room is the heart of Estelle. Constructed from trees native to its land, the log cabin is storied to be the first home built in East Nashville. The vaulted ceiling creates a spacious feeling, while the large windows and glass doors allow for natural light to pour into the room. The logs and mortar are original and create an architectural backdrop unique to our venue making this room an iconic setting for any event.





# *The Space*



## PORTICO

Once an open air back porch, the Portico was enclosed in the early 20th century. Today it offers a versatile area that can host a myriad of services. This corridor offers direct access to the Drawing Room, Courtyard, Beverage Kitchen, Catering Kitchen, and Restrooms. The Portico is the perfect spot to host our elevated Estelle Bar & Catering services or additional seating.



## COURTYARD

Located just off the Portico and surrounding the Carriage House, the Courtyard is ideal for cocktail hour. Partially covered, it offers your guests an opportunity to enjoy the outdoors as they make their way to the Carriage House. Connecting the primary space and the Carriage House, this area extends the possibilities for guest experience and event design.



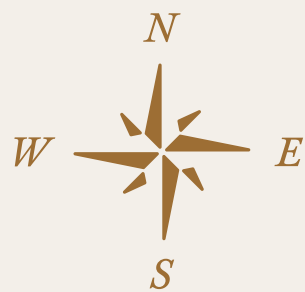
## EAST & WEST SUITES

The suites are located just off the Drawing Room and are the bookends of the log home. Each suite can function separately, as meeting rooms or dressing rooms, with access to the front porch. They can also be opened to connect with the Drawing Room, creating a seamless flow for additional seating. Amenities include: luxe soft furnishings, high-end finishes, flat screen TV and WIFI.

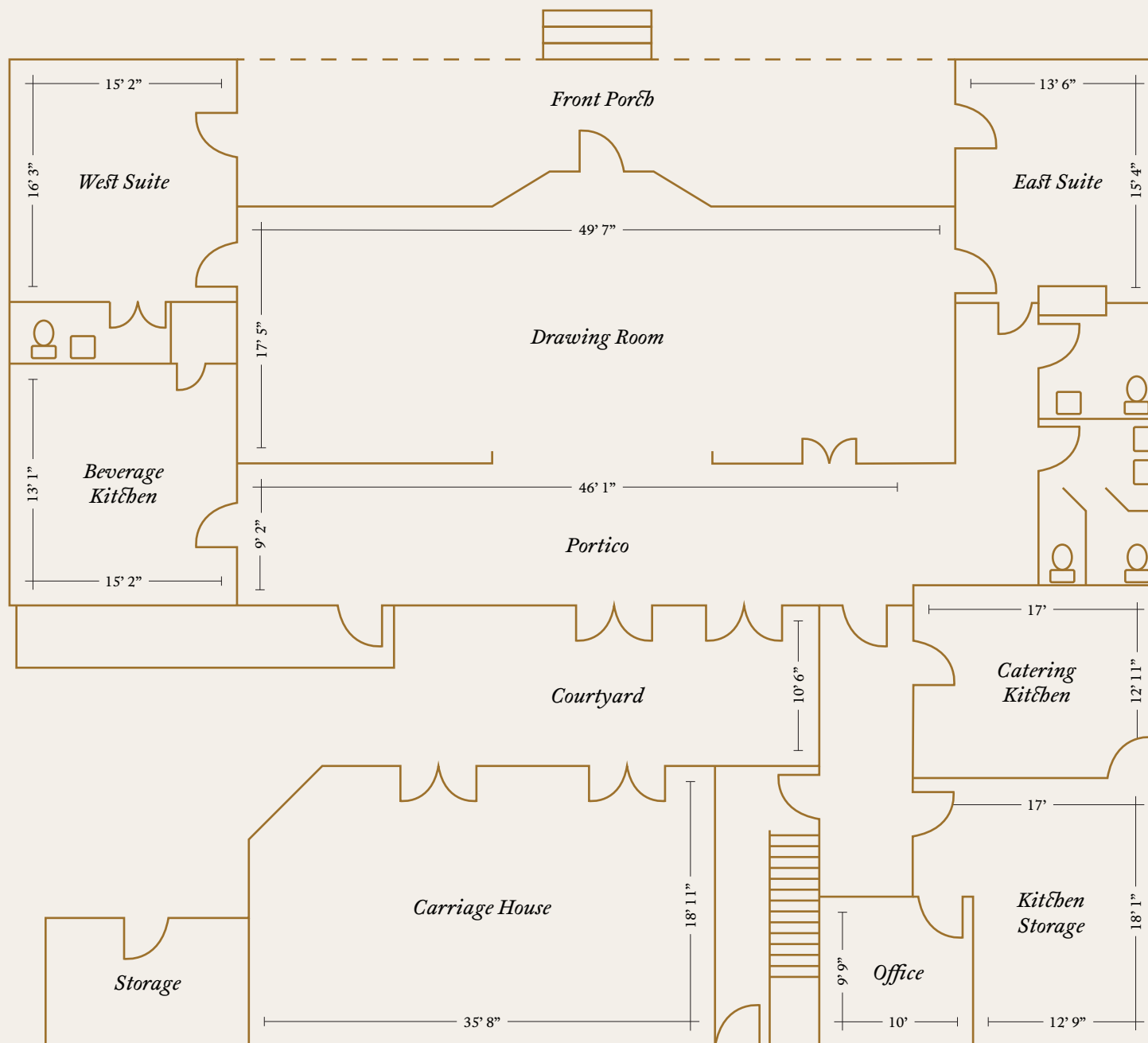


## CARRIAGE HOUSE

French doors greet your guests as they enter the Carriage house. This room is the perfect spot to enjoy one of our custom cocktails or dance the night away – it's also a functional break-out room for your corporate meeting. Exposed wood beams, natural light and elevated furnishings make this room a bonus to any event.



Property MAXIMUM  
Capacity 100





## *The Nest*



Situated above the Carriage House, the Nest is our smaller private space. The design and furnishings elevate your small dinner party or celebratory gathering. For events over 75 the Nest is included in your venue rental, it becomes an essential area for the host to prepare for the festivities. Offering dinner seating for up to 20, this space includes private entrance, dining / lounge area, kitchenette, and powder room. The Nest can be added to any Estelle rental or stand alone.

*\*The Nest MAXIMUM Capacity 20 (Located on the 2nd Floor).*





## Catering

At Estelle, catering is provided by our EXCLUSIVE partner, Flavor. Booked clients work directly with our Catering Manager to plan the service style and menu for their event. The Flavor team's experience and expertise provide a multitude of options including corporate breakfasts and seated dinners. Their menu features innovative options from coffee rubbed tenderloin to spiced challah French toast, all prepared with the freshest ingredients. Flavor exceeds expectations, making them the perfect complement to any event.

### *CATERING MINIMUMS:*

*Monday through Thursday –  
DropOff Box Breakfast/Lunch \$300, Full Service  
Breakfast/Lunch \$1000, Dinner/Reception \$1,000*

*Friday through Sunday – \$3,000*

*\*Minimums do not include Service Staff, Taxes, or  
Operations Fees*



## Beverage Service

All types of service include: Glassware, Custom Menus, Garnishes, Mixers, Ice & Service Items in the per drink pricing. Please see the Estelle Bar Brochure for more details.

*BEVERAGE MINIMUMS: Monday through Thursday – \$750; Friday & Saturday – \$1,500; Sunday – \$1,200; The Nest – \$300*

*Per Drink*

### CONSUMPTION

When selecting a Consumption Bar the host will pay PER DRINK served/ordered (alcoholic & non-alcoholic) throughout the duration of the event. If you are serving a Consumption Bar, simply choose your individual offerings from Local Brews, Curated Wines & Familiar Favorites... Titos, Jack Daniels, Hendricks and more!

*Per Person*

### PACKAGES

When selecting a Package the host will pay PER PERSON based on the chosen Tier and Duration of Event (4 & 5 hour service options). Simply select your Tier of Package from the Beer & Wine Bar to the Premium Bar (elevated offerings).



## *Event Space*

The layout of the venue creates seamless access to amenities and services throughout. This versatile property offers indoor/outdoor options, as well as space to host guest counts ranging from 20-100. Our in-house team offers support on floorplans, furniture set-up and hospitality offerings for your unique event.

## *Catering*

The food & service for your event is provided by our EXCLUSIVE partner, Flavor. Flavor is one of Nashville's premier caterers. They offer a diverse array of menus and service types: plated, buffet, family style, passed apps or stations. Their expertise and professionalism will enhance your guest's event experience.



## *Rentals*

Carefully selected Luxe rentals are provided at Estelle. Custom built tables and curated chairs are hand selected to exceed the expectations of design and comfort. Each venue rental includes plateware, flatware and linen napkins. Soft seating vignettes become an extension of this “home-like” setting making all guests feel welcomed at Estelle.

## *Beverage Service*

Our in-house Beverage Service is carefully curated for each event. Led by our Beverage Director, master mixologist and sommelier, the bar becomes another place where our service shines. Custom cocktails, hand selected wines, and diverse beer options allow our team an opportunity to share their knowledge and passion. Custom bars & glassware are included in each Estelle Bar Experience.

# Estelle Venue Pricing

*All pricing includes Venue, Event Furnishings, Plateware, Flatware & Linen Napkins.  
Catering & Bar Service Priced Separately.*

## *Guest Counts Under 75*

Friday/Sunday | \$5,500

Saturday | \$6,500

*14 hour venue rental includes all areas except The Nest.  
Include The Nest for an additional \$1,000.*

## *Guest Counts 75 to 100*

Friday/Sunday | \$6,500

Saturday | \$7,500

*14 hour full property rental including The Nest.*



## *Hourly Rate*

Monday - Thursday | \$400/hour

*Venue Rental, Excludes The Nest*

Corporate & Cocktail Events | 5 Hour Min.

Weekday Weddings & Receptions | 12 Hour Min.

*Minimum Hours include the time  
required for setup and breakdown. Include  
The Nest for an additional \$100/hour.*

## *The Nest*

\$1,200 Rental | 4 Hours

*Includes required ABC Bartender/Butler Service*

Catering

*Flavor or Drop-off Catering Allowed*

*Beverage Service must be provided by  
ESTELLE (minimum \$300).*

*Term & Conditions: 100 Guests Maximum. \$400 Flip Fee required if hosting both Ceremony & Reception onsite.  
Estelle Security Guard Required: \$400 for Full Day / Hourly & Nest Rentals \$50/hr (4 hr Minimum). Venue rental includes state tax.*

Estelle



(i'stel) *noun.* from a Latin word meaning “star.”

814 WOODLAND ST.  
EST. 1807  
ESTELLENASHVILLE.COM