

W PHILADELPHIA



W PHILADELPHIA WED YOUR WAY



W Philadelphia
1441 Chestnut St | Philadelphia, PA 19102



Element Philadelphia
1431 Chestnut St | Philadelphia, PA 19102



STEAL THE SCENE PACKAGE



Cocktail Hour

Premium Open Bar Service including Bartenders
Choose a selection of 6 Passed Hors D'oeuvres
Charcuterie Display
Signature Dolce Pasta Display

Reception

4-hour Premium Open Bar Service including Bartenders
Choice of Soup or Salad
Choice of Premier Entrée
Sparkling Wine Toast
Tablesides Wine Service
Tablesides Coffee / Tea Service
Trio of Butler Passed Desserts

Rooms

Courtesy Block w/ Bag Distribution at Welcome Desk

Design

Choice of Hotel Linen Color, Hotel Banquet Chair and Tables,
Black Dancefloor, Staging for Entertainment

Photo Op!

VIP Access to our 49th Floor Rooftop Patio for Wedding Photo

LIVE IT UP WITH UPGRADES

STEAL THE SCENE

Top Shelf Open Bar Service including Bartenders
Butler Passed Champagne upon Arrival
Choose a selection of 8 Passed Hors D'oeuvres
Steamboat Round Carving Station
Custom Cocktail created with expert Mixologists

LUST FOR LIFE

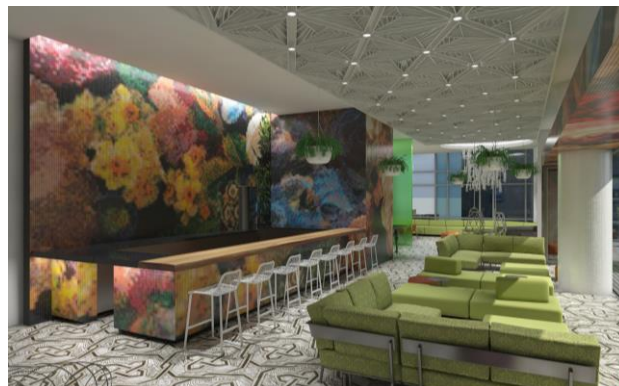
Raw Bar during Cocktail Hour
Wedding Sheet Cake & Choice of 4 Butler Passed Desserts
10% Discount for guest at AWAY Spa throughout the weekend



YOU'RE ON THE LIST

TOUR THE ROOFTOP WET DECK + BAR

Looking for the perfect after party to amp things up? Your guests have backstage access to our rooftop Wet Deck + Bar. Sneak around the corner with cocktail in hand and escape to our Garden. Shhhh... it's a SECRET.



WEDDING INFO

Ceremony

Ceremony rooms are available for rent, including chairs, risers if needed, (2) wireless microphones, audio connection for music device and technician for pre-testing.

Package Info

Menus and a la carte pricing are subject to change. Package price and inclusions will be confirmed and included in the sales agreement.

Special Events Planners & Décor

Please inform our Event Managers of any vendors so we can supply them with necessary paperwork and hotel procedures to successfully execute your event.

Additional Charges

25% service charge & 8% sales tax applies to all non-alcoholic beverages, food, A/V, and room rental. 10% local beverage tax applies to all alcohol.

Deposits & Payments

A non-refundable deposit of 25% of estimated charges is required to confirm your event. The payment schedule will be listed in the agreement and final payment is due 7 days prior to your event.

Guarantees

Final guarantees are due 5 days prior to your event. The hotel will be prepared for 5% over your guarantee.

Merchandise & Articles

Hotel shall not be responsible for damages or loss of merchandise or articles brought into the hotel or left attended.

Audio/Visual Services

We proudly partner with Five Star A/V for any event production and lighting needs. There is a required \$600 charge for DJ's to connect to house sound and \$1100 charge for bands to connect to house sound.

Parking

W Philadelphia provides valet parking , currently priced \$60 per night or daily at \$39. This can be applied to a master account.