



Host Your Event at Circa 29

Hidden in the lower level basement space of the historic S&W Cafeteria building, this speakeasy-style downtown Asheville event venue is the perfect backdrop for your event. The space is elegantly appointed with multiple seating arrangements available for up to 150 people. Enjoy full bar service from our professional staff and creative catering options from the purveyors above or use an outside caterer.

Venue Rental Rates:

Price range based on time of year

Monday-Wednesday, Sunday: \$1,500-\$2,250

Thursday-Saturday: \$2,750-\$4,250



Venue rental rate includes sound/AV equipment, existing furniture set up, event captain present from start to finish of your event, and cleaning and trash removal.



The Bar at Circa 29

Circa 29 holds a full NC ABC license and our professional bar staff will create a seamless experience for your guests. A beverage minimum and gratuity will be in place for your group. Actual drink costs will be calculated based on the current retail prices of liquor, beer and wine.

We have several bar tiers and you can choose which best suits your event. The creative bar staff is able to create a custom menu just for your event if you so choose. For more details, see the bar program attachment.



Catering at Circa 29

Catering is available from the food purveyors in the S&W Market above, or you are welcome to arrange to bring in food from an approved outside caterer.

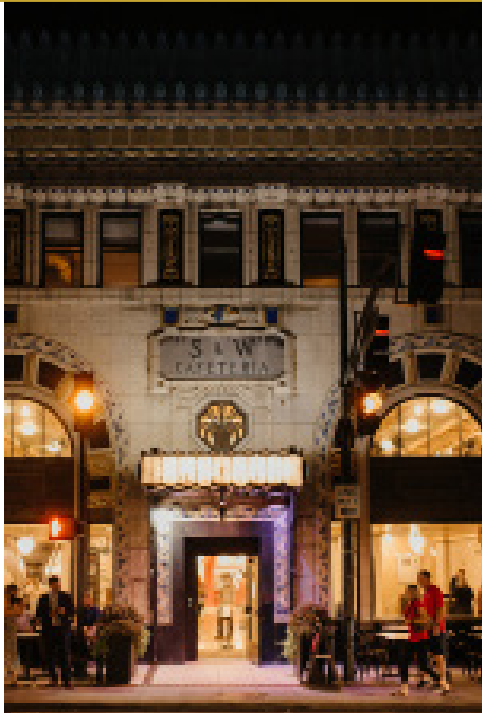


events@swmarketavl.com

About the S&W and Circa 29

Located in the historic S&W Building in downtown Asheville, The S & W Market and Circa 29 showcase the best of Asheville's local independent restaurants and private event space in a one-of-kind setting.

Listed on the National Register of Historic Places, the S&W Building is a prized example of 1920's art-deco architecture. Designed by architect Douglas Ellington for the S&W Cafeteria chain based out of Charlotte, the new Asheville S&W first opened to the public on July 15, 1929. "Asheville deserved the finest of our chains because Asheville is one of the show pieces of our country," stated Frank Sherill,



president of the S&W, in the full-page newspaper article on opening day, "Because Asheville has such a cosmopolitan population, and has such a constant flow of visitors, it is natural that everybody who does any building here should try to do it in as an artistic manner as possible." The reimagined space now again has the vibrancy and energy that made it an exciting destination so many years ago.



events@swmarketavl.com