



HOST YOUR BIG DAY AT THE MULEHOUSE

Do you want to get married in a church, but want to have a bar, a band and dancing? The Mulehouse is your answer! It has the look of a church with the original stained glass windows, but the cool art deco/industrial feel of a luxurious ballroom with exposed brick walls, steel columns and 9 stunning crystal chandeliers.

CONTACT US

812 S High Street
Columbia, Tennessee 38401

TRACY MCGLOCKLIN

Business Development
931-490-9400, ext 106
tracy@themulehouse.com



VENUE RENTAL OPTIONS

VENUE RENTAL

- Exclusive use of all indoor and outdoor spaces (except offices + studio)
- Stage
- Existing furniture in dressing rooms and The Lounge
- Private dressing area for Bride, Groom and wedding party up to 20 ppl
- Wi-fi
- Facility manager
- Onsite ice / water / dumpster for trash
- Parking lot with 45 spaces and ample street parking
- State-of-the-art sound, lighting + video capabilities

VENUE RENTAL PLUS

- Everything listed in the Venue Rental Package PLUS
- Any rentals you choose from our catalog including tables, chairs, china, mobile bars and black linens

ALL-INCLUSIVE

- Everything included in the VENUE RENTAL PLUS package
- You may select any or all of the following services to be included:
 - Wedding Planner
 - Florist
 - DJ
 - Photographer
 - Videographer

2023 RATES

MON-THUR	\$5,500
FRIDAY	\$7,500
SATURDAY	\$8,500
SUNDAY	\$6,500

* Rates subject to change based on availability, holidays and peak periods.



3



4



5



6

1. Stage
2. The Lounge
3. Dressing Room B
4. Courtyard
5. Dressing Room A
6. Blue Room
7. Theater
8. Balcony



7



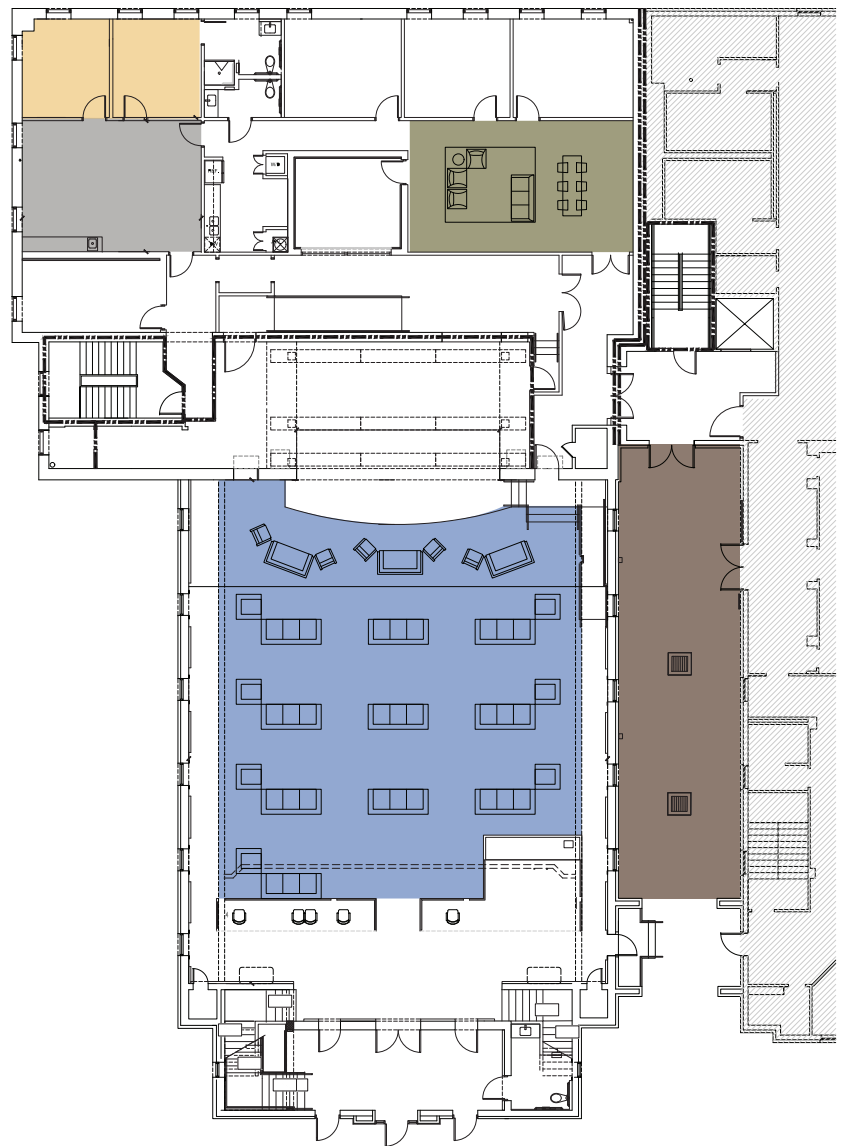
8

EVENT SPACES

Main Floor

Main Floor

- **THEATER**
407 Standing Capacity
327 Theater Seating Capacity
- **GROOM'S DRESSING AREA**
Flexible Seating for 15
- **COURTYARD**
SIZE: 957 sq. ft.
136 Standing Capacity
63 Seated Capacity
- **BLUE ROOM**
SIZE: 418 sq. ft.
- **DRESSING ROOMS**
SIZE:
Room A 152 sq. ft.
Room B 155 sq. ft.

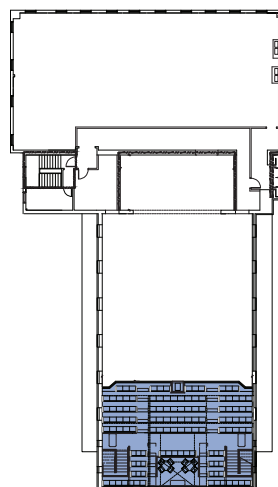


Second Floor

- **BALCONY**
130 Pew Seating Capacity

Lower Level

- **THE LOUNGE**
SIZE: 1,045 sq ft
69 Capacity
- **DAWSON HALL**
SIZE: =2,900 sq ft
150 Capacity



Second Floor