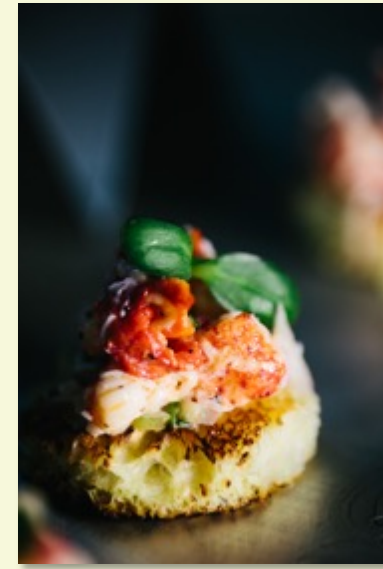


## *Prospect Park Boathouse*

The **Boathouse** is an iconic venue overlooking the Lullwater in the heart of Prospect Park. The Park itself is one of Brooklyn's most treasured destinations and a city landmark. With its Beaux-Arts style, white terra-cotta façade, and French doors opening out to a terrace overlooking the lake, the Boathouse enhances the natural beauty of the Park, facing west to capture sunsets over the lake.

**Purslane**, the Boathouse's exclusive caterer, brings decades of experience to executing weddings of all sizes and styles. Our expertise lies in creating beautiful, seasonal dishes with an eye towards sourcing locally and sustainably. Playing off the detail and sumptuousness of the Boathouse, our chef team will work with you to create an intimate, seamless, and memorable event that is reflective of your taste.







# Venue Information

The Boathouse space includes an outdoor terrace and an upper-level balcony overlooking the lake. The Boathouse is available for both indoor and outdoor ceremonies.



## Capacity

75 person guest minimum Friday - Sunday April - October

150 guests for a seated dinner (inside)

225 guests for a standing event (inside)

44 guests (balcony)

## Fees

exclusive of a \$1,000 refundable security bond

	Nov - Mar	Apr - Oct
Tues – Thurs	\$3,500	\$4,500
Saturday	\$5,500	\$7,000
Fri & Sun	\$4,500	\$6,000

\*The Boathouse is open to the public during select periods. Available dates and times may vary accordingly.

\*Fees cover an eight-hour rental, including two hours for vendor load-in and set-up, and one hour for vendor break-down and load-out.

\*Overtime can be purchased for \$500 per hour.

\*Events may not run past 12:00 AM.

\*Fees include a one-year membership to the Prospect Park Alliance.

## Purslane

Brought to you by the team behind Rucola, June, and Metta, our food is ingredient driven with a slow food ethos and a vegetable focused menu. Purslane believes in sourcing locally and humanely, and reducing food waste with an eye towards a zero-waste policy. We feature a wide variety of menus for any style of dining, and are happy to customize packages based on your occasion. Our event pricing ranges from \$175/pp - \$275/pp

## Getting Here

The Boathouse rental includes use of a large parking area located a block from the space. Additional permits are available upon request. To reach the Boathouse, enter Prospect Park just south of 452 Flatbush Ave. Or use the entrance at Lincoln Road and Ocean Ave accessible via the Prospect Park subway and bus stop.

