

# THE LINEY MOON

## • PRICING •

### ENTIRE PROPERTY + VENUE RENTAL

WEEKNIGHT	BEGIN AT \$2499/NIGHT
WEEKEND	BEGIN AT \$3499/NIGHT

### EXTRAS

EVENT FEE	\$750
PET FEE	\$250
EARLY/LATE CHECK IN/OUT	\$100/HR

6% HOTEL TAX + FEES **NOT** INCLUDED

### BOOKING PROCESS

A 50% deposit + signed rental agreement are due at the time of booking. Some months have 2-3 night minimum stay requirements, but we're happy to discuss your request to see if we can accommodate you!



# THE LINEY MOON

• F A Q •

## BOOKING PROCESS:

- A deposit + signed rental agreement are due at the time of booking. Dates are not reserved until both are completed. The deposit amount is 50% of reservation total; however, we may be able to accommodate a more customized payment structure if needed.

## CANCELLATION POLICY:

- 60+ days out: 100% refund (less the applicable fees)
- 0-60 days out: No refund

## CHECK IN & OUT:

- Check in is at 4pm and check out is at 10am
- Hours may be added to check in and out, however due to the possibility of surrounding reservations & housekeeping duties we are unable to guarantee additional hours until closer to your reservation date.
- If additional hours are permitted, the first hour is complimentary. Each additional hour is subjected to the hourly fee.

## PREFERRED VENDORS / FOOD / ALCOHOL:

- In order to allow our guests to tailor their event to their specific budget and unique vision, we do not require the use of certain vendors. We do, however, have a list of suggestions upon request.
- Food and alcohol may be brought in and served at your discretion.



# THE LINEY MOON

## • F A Q •

### RESTRICTIONS | DECORATING

- We encourage everyone to decorate to their liking while still respecting the property.
- We ask that tape, adhesive, etc. be removed prior to check out.
- Stakes in the yard are discouraged due to water lines. When renting a tent for plan B, we require the use of water barrels or sand bags.
- Nails, screws, and other invasive attachments are prohibited.
- Rearranging furniture is allowed, however we do ask that you are gentle and careful as some items are antique, and to do your best to replace in the manner you found everything.

### OUR TWO MAIN RULES:

- All amplified music must be turned off/down no later than 10 pm on weekdays and 11pm on weekends.
- If your event has a guest count of more than 50 people, the rental of a portable restroom trailer is required. This is a requirement regardless of whether everyone is staying on the property or not. This is a county regulation regarding septic tank capacities and is in place to prevent septic systems from becoming overworked, so it is strictly enforced.
- We recommend Leinneweber Services or TXLoo for restroom rentals.



# THE LINEY MOON

## PREFERRED VENDORS

### TRANSPORTATION

THE DRIPPERY TOURS

512-870-7883

### PLANNER/COORDINATOR

EVENTS BY ASM

281-788-5939

### DJ

FREETAIL PRODUCTIONS

361-549-4096

### CATERING

GOURMET GALS

512-858-7384

### PHOTOGRAPHY

DILETTA ELAINE

210-413-5386

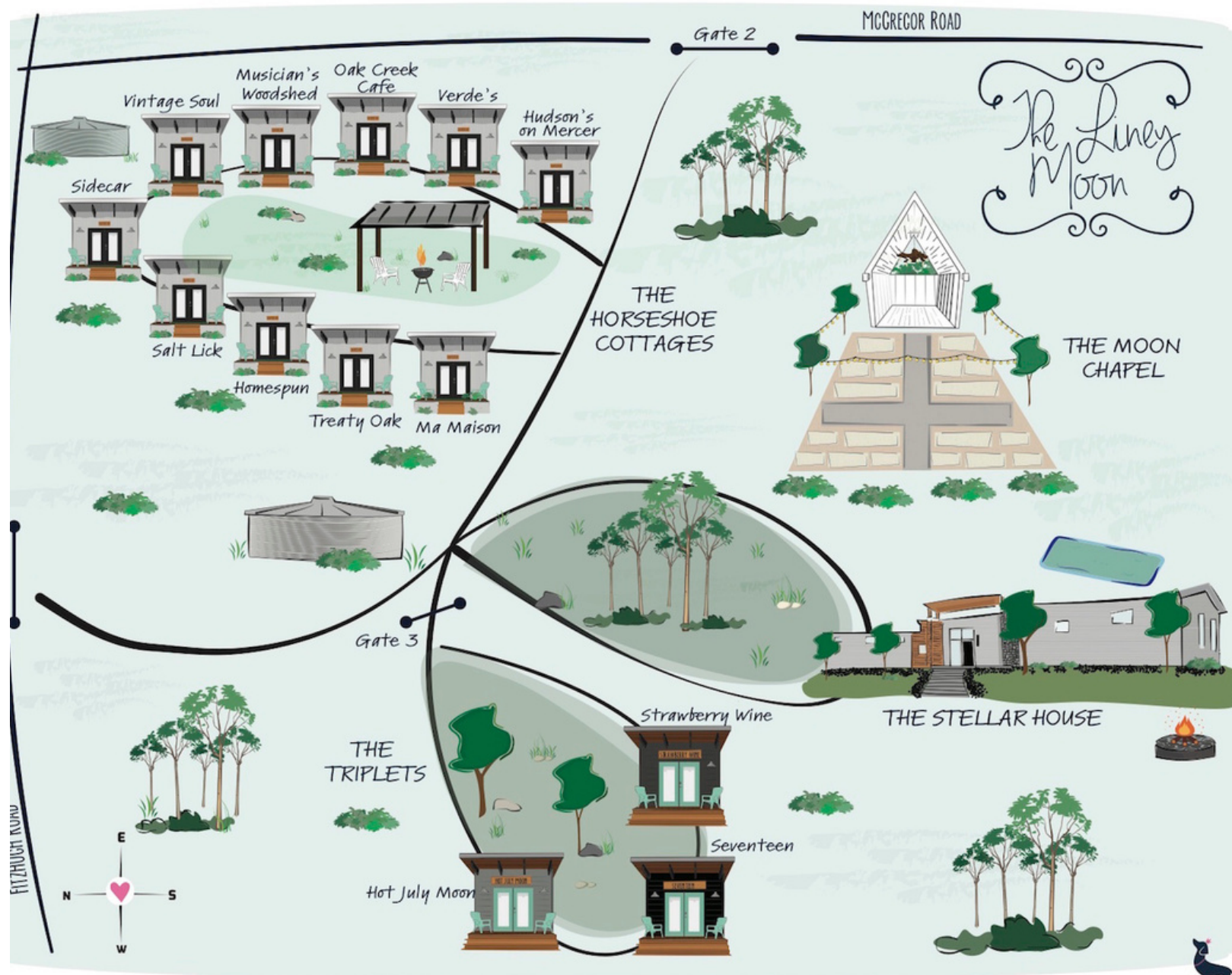
### RENTALS

PREMIERE EVENTS

512-829-4498

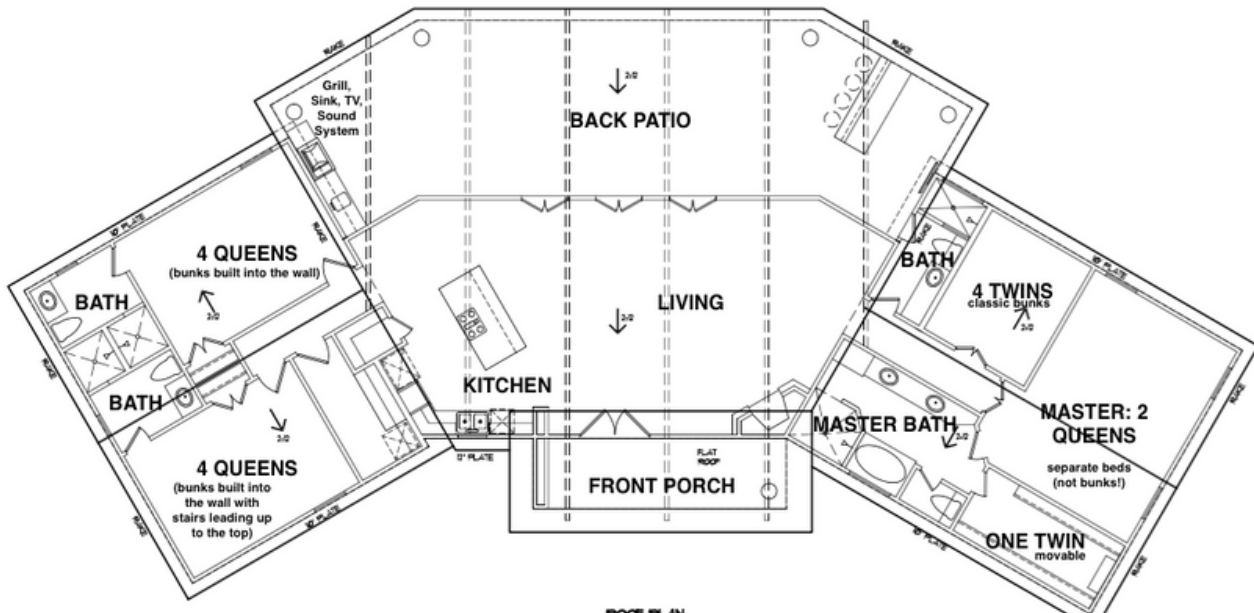
# THE LINEY MOON

## Property Map

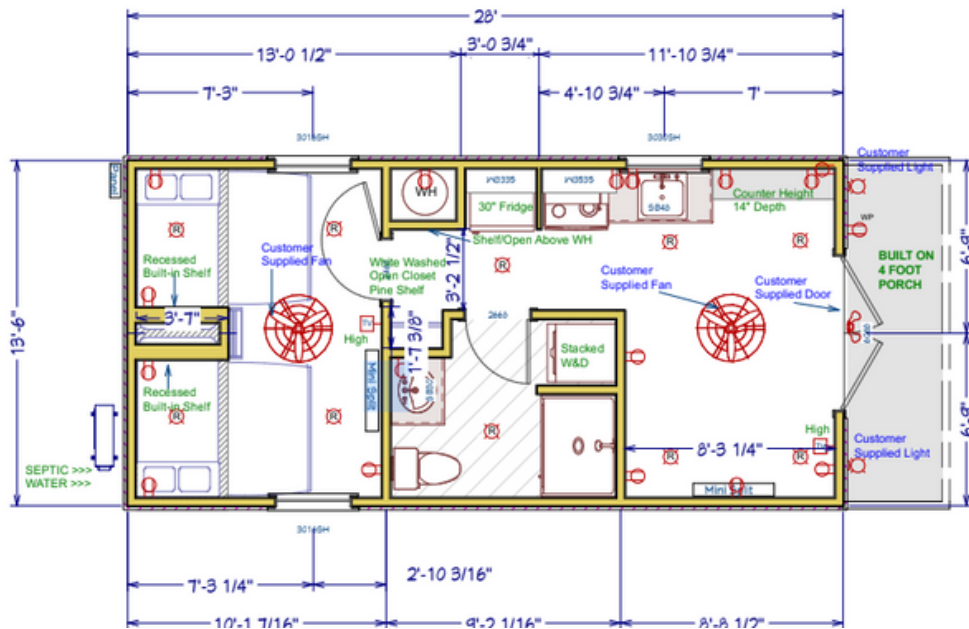


## Floor Plans

# Stellar House



## Triplets



# THE LINEY MOON

## Floor Plans

### Horseshoe Cottages

