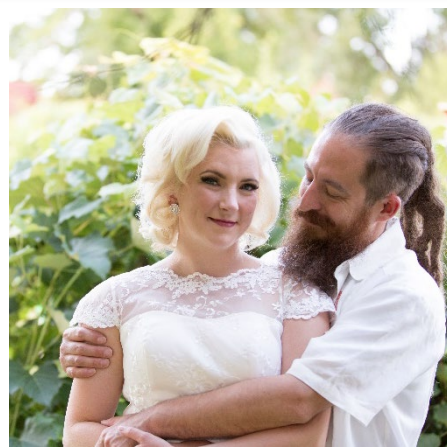
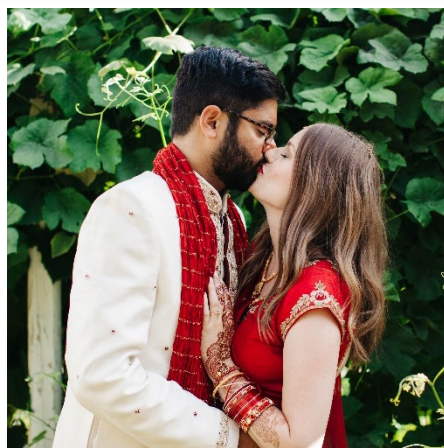


Come create memorable life stories with us!



sales@copperleafeventcenter.com | www.copperleafeventcenter.com | 303-469-0622 | 1-800-920-8422

Copper Leaf Pricing Packet

This packet is designed to guide you through the process of creating your very own Copper Leaf event. Start the process here, it's as easy as one, two, three!

1. On this page you will find our Season Chart and Revenue minimums
2. On pages 2-4 you will find our package options and prices. Each package lists the services and features offered, this includes all your venue, catering, staffing, rentals and services costs
3. On Page 5 you will find various bar options we provide. Decide on the bar service that will best fit the needs of you and your revelers. We offer flexible options for any budget

Here's how you calculate a rough estimate of your cost:

- a) Once you have a date or day/month in mind use the season chart on this page to find the Season your event date falls on. **Remember:** You get exclusive access to our venue. We hold ONLY one event at a time at our venue
- b) From the Venue Pricing table below, find out your revenue minimum for the date or day/season you are considering
- c) Now choose a package from pages 2-4 that best meets your needs. Multiply number of guests with per person package price to calculate your total cost of catering, rentals and other services
- d) If considering Open Bar: Multiply number of adults with per person price of bar. Then add it to the amount calculated in step c) above to get rough total cost of your wedding at Copper Leaf

From here you can begin discussions with a sales associate for creating a custom proposal that best fits your budget and needs – including menu, colors, décor, rentals, services.

Season Chart	May 1-September 30, December 1-31, Holiday Weekends	October 1-November 30, January 2 – April 15
Peak Season	X	
Off-Peak Season		X

Revenue Minimums	Any Season 7am-3pm	Peak After 3pm	Off-Peak After 3pm
Monday – Thursday	\$800	\$1600	\$1600
Sunday	\$500 12pm-3pm	\$5000	\$4500
Friday	\$800	\$7000	\$6500
Saturday or Holiday	\$1600	\$8000	\$7500

Evergreen Package

If you are looking for just the basics to build your dream wedding around, this all-inclusive package is for you. It is also an ideal choice for social gatherings, be it a large family function or a more formal corporate event or party. It includes everything you might need to host a simple, elegant event.

Off-Peak Season Pricing Chart (Per Person)*†		Peak Season Pricing Chart (Per Person)*†	
Monday – Thursday	\$50	Monday-Thursday	\$55
Sunday	\$55	Sunday	\$60
Friday	\$60	Friday	\$65
Saturday or Holiday	\$65	Saturday or Holiday	\$70

Features and Services include:

- Sole use of Copper Leaf Event Center for 8 hours, 3 pm or later (2 hours of set up, ½ hour of ceremony, 4 hours of reception and 1.5 hour of break down)
- One-hour of rehearsal time based on venue availability (outdoor access only unless it is an indoor ceremony)
- Use of reception tables, as listed in our inventory
- Serving Staff to setup, break down and cleanup including busing and event support
- White Fanback Ceremony and Reception Chairs
- Choice of black, white, or ivory linens and select napkin colors
- Standard dinner china, flatware, and glassware
- Premium non-alcoholic beverages: spa water (infused with lemon, cucumber, fruits or mint), lemonade, iced tea, soda, coffee, and hot tea with condiments
- Complementary access to on-site Bride/Groom suites
- Complementary cake cutting and service
- Complementary dessert cart and wine barrel appetizer station
- Our basic menu offerings, served buffet style (1 appetizer, 1 salad, 1 chicken entrée, 1 starch, 1 veggie, rolls and butter)

*This cost is before taxes and gratuity. Prices are subject to change without notice.

† All Packages are Customizable

Blue Spruce Package

This package caters to the couple looking for a lot more. With additional finishing touches and increased selections of upgrades, your event is sure to have a sophisticated flair. For the company looking to WOW your coworkers or clients this would be a fantastic choice for a big celebration.

Off-Peak Season Pricing Chart (Per Person)*†		Peak Season Pricing Chart (Per Person)*†	
Monday - Thursday	\$80	Monday - Thursday	\$85
Sunday	\$85	Sunday	\$90
Friday	\$90	Friday	\$95
Saturday or Holiday	\$95	Saturday or Holiday	\$100

Features and Services include everything in the Evergreen package plus:

- One Additional Hour Of Reception for a total of 9 hours of time (2 hours of set up, ½ hour of ceremony, 5 hours of reception and 1.5 hour of break down)
- Upgraded Fruitwood Padded chairs for reception
- Choice of gold or silver acrylic chargers
- Centerpieces: Choice of, Woodland/Nature, Rustic/Country, Traditional, Contemporary
- A late-night snack bar – choice of nacho, popcorn, or s'mores
- Full Day-of-Event Coordination (Rehearsal, Wedding, Reception)
- Lighted "LOVE" sign
- Eight Uplights
- Choice of any linen and napkin color offered by our partner Rental Company
- Complementary in-house professional sound system, including speakers, wired microphone, mixer and projection screen
- Complementary Speaker and microphone for outdoor ceremony
- Complementary use of the fire pits for cool weather cocktail hours or late-night receptions
- Menu has additional offerings and upgraded menu items (1 additional appetizer, 1 additional entrée- choice of beef/pork/chicken **for a total of 2 appetizers, 1 salad, 2 chicken/beef/pork entrées, 1 starch, 1 veggie, rolls and butter**)

*This cost is before taxes and gratuity. Prices are subject to change without notice.

† All Packages are Customizable

Golden Aspen Package

Are you ready to pull out all the stops? This package is for the couple who wants (almost) everything. Featuring several luxury add-ons to make your event one of a kind.

Off-Peak Season Pricing Chart (Per Person) *†		Peak Season Pricing Chart (Per Person)*†	
Monday-Thursday	\$130	Monday-Thursday	\$135
Sunday	\$135	Sunday	\$140
Friday	\$140	Friday	\$145
Saturday or Holiday	\$145	Saturday or Holiday	\$150

Features and Services include everything in the Blue Spruce package plus:

- One Additional Hour Of Reception and 4 Additional Hours of getting ready time for a total of 14 hours of time (6 hours of set up and getting ready, ½ hour of ceremony, 6 hours of reception and 1.5 hour of break down)
- Choice of Padded Fruitwood Reception chairs or white reception chairs with Ivory Chair Covers with your choice of sash colors
- Upgrade to Gold or silver rimmed dinner china
- Choice of a welcome beverage or champagne toast for guests
- 8-inch single tier ceremonial cutting cake
- Sweetheart Table setup
- Menu has additional offerings and upgraded menu items (**1 additional appetizer, 1 option of Fish entrée - for a total of 2 appetizers, 1 salad, 2 fish/chicken/beef/pork entrées, 1 starch, 1 veggie, rolls and butter**)
- Lunch and Beverages for Wedding Party served in your Suites at Copper Leaf
- Our Premium Unlimited Open Bar for 4 hours

*This cost is before taxes and gratuity. Prices are subject to change without notice.

† All Packages are Customizable

Bar Service

Our packages offer something for any group and every budget. Bar service is included for the length of 4 hours, which can be upgraded up to the number of reception hours in your package. Our per person price for alcohol packages only includes your 21+ guests, so make sure to subtract your under-age attendees from this count.

House Unlimited Full Open Bar (includes bartending)

\$20 per person plus taxes and gratuity (Beer and Wine Only Open Bar is just \$17.50 per person provided we can sell other liquor to your guests)

Red wines: Merlot, Cabernet Sauvignon, Pinot Noir

White wines: Chardonnay, Pinot Grigio, Sauvignon Blanc, Moscato, Riesling

Beers: Coors light, Bud, Bud light, Blue moon (on tap), Fat Tire (on tap) Well Liquor: Rum, Bourbon, Scotch, Gin, Vodka, Tequila

Premium Unlimited Full Open Bar (includes bartending)

\$30 Per Person plus taxes and gratuity

Red wines: Merlot, Cabernet Sauvignon, Pinot Noir

White wines: Chardonnay, Pinot Grigio, Sauvignon Blanc, Moscato, Riesling

Beers: Coors light, Bud, Bud light, Blue moon (on tap), Fat Tire (on tap), Corona Extra, Angry Orchard, Rotating IPAs

Liquor: Bacardi, Sailor Jerry's, Captain Morgan, Jim Beam, Jack Daniels, Jameson, Crown Royal, Dewar's White Label, The Glenlivet 12, Tito's, Absolut, Grey Goose, Bombay, Tanqueray, Hornito's Reposado, Fireball, Hennessy, Malibu, Champagne

Combine our Open and Hosted Bars with a Cash Bar to offer your guests more options.

Hosted Bar

Client decides the amount to spend and specifies whether it is beer/wine or full, whether it is well or premium drinks. Guests will need to buy anything not covered under hosted bar. Cost per drink is between \$4.00 and \$10.00.

You can have us stock any of the spirits listed above. **Flat fee of \$250 per bartender staffed for whole evening**

Cash Bar

Guests can expect to pay between \$4.00 and \$10.00 per drink.

You can have us stock any of the spirits listed above. **Flat fee of \$250 per bartender staffed for whole evening**

The number of bartenders needed will depend on your guest count. For Beer and Wine bar, we suggest 1 bartender per 75 guests and for full bar, we suggest 1 bartender per 50 guests.

All bar packages include standard drink mixers and garnishes, as applicable. If you have a specific cocktail or brand of liquor you would like featured talk with an associate about our à la carte bar options.

* Per Hour Per Person Cost to extend an Unlimited Open Bar ranges from \$6 to \$9