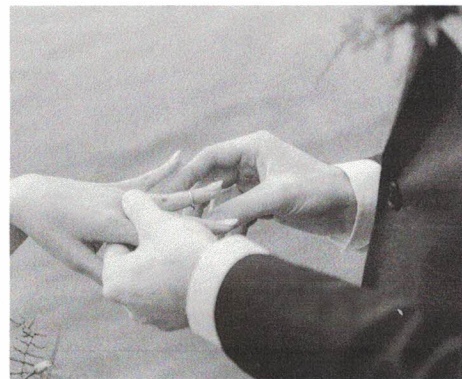
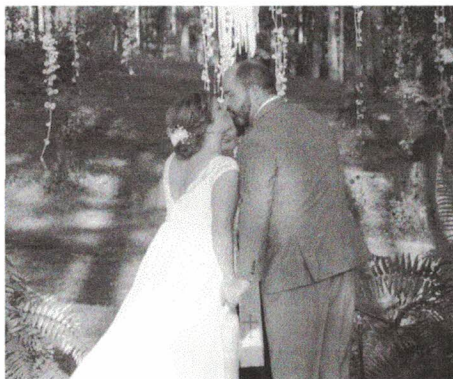
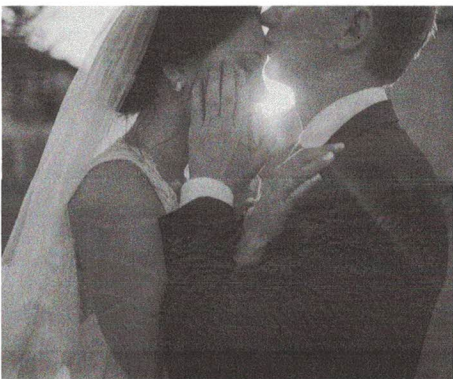


# Pop's Farm

## EVENT VENUE

*Natural beauty in the foothills of the Blue Ridge Mountains*





# WELCOME TO POP'S FARM

---

Located in the rolling foothills of the Blue Ridge Mountains, just outside of Martinsville, Va, Pop's Farm is home to the Rooster Walk Music & Arts Festival each May. Pop's Farm is also available year-round for private rentals. The venue is conveniently located within 2 hours of several larger cities, including: Roanoke, Blacksburg, Lynchburg, Greensboro, Winston Salem and Raleigh/Durham/Chapel Hill, among others.

Pop's Farm offers a gorgeous natural backdrop for any event. The venue has more than 75 acres of tent-camping (both shaded and grass lawns), a covered stage for musical performances, a covered picnic shelter with capacity of 125, a professional-grade white wedding tent (approx. 30x50), multiple level areas for RV camping, many of the basic needs of an event (tables, chairs, power supply, etc.) and a beautiful, expansive pond that serves as a stunning visual backdrop in the center of the property.



## EVENT SPACES

MAIN LAWN

LOVERS LAKE

THE PINE FOREST

KIDS COOP

Amenities included in your custom package

Exclusive use of Pop's Farm  
during a 6 hour time frame

Dedicated on site event coordinator for the duration of event

Use of 30 x 50 event tent

Outdoor Bistro String Lighting

On site parking for event guests

## EVENT RATES:

	WINTER December, January, February & March	HIGH SEASON April - November
FRIDAY & SATURDAY	\$3,000.00	\$4,000.00
SUNDAY - THURSDAY	\$2,000.00	\$3,000.00



# FACILITY FAQ's

---

Q: How much time is allowed for set up and clean up?

Access to Pop's farm will be allowed 6 hours prior to the guest arrival time.

All decor items must be picked up by 10:00am the day after your event.

All tents or other rentals must be scheduled for removal by 10:00am the day after your event.

Access to the venue the day prior to an event may be arranged. Please inquire for pricing.

Q: What is the timing for my wedding?

You may use Pop's Farm for exclusive use up to 6 hours, which starts at the beginning of your ceremony.

Amplified music and alcohol service must end 30 minutes prior to the end of your event.

Q: Is Pop's Farm available for my wedding rehearsal?

Wedding ceremony rehearsals may be scheduled the day prior to your wedding. All rehearsals must be scheduled to conclude by 5:00pm. An on site venue coordinator will be present for all rehearsals.

Q: Can we host live music on the stage?

Yes! The stage is available at an additional set up fee. Additional A/V may be required depending on your request. Please inquire for more details.

Q: Are there any on site overnight accommodations available for use?

Pop's Farm has three primitive cabins available to rent for overnight accommodations. Each cabin is equipped two queen futons and two XL twin loft beds, sleeping 6. The cabins are not equipped with power, water, or bathroom facilities. A generator is available to power the cabins. Restroom trailers can be rented through your venue coordinator. RV & tent camping sites are also available on site.

---

IF YOU HAVE ANY QUESTIONS,  
FEEL FREE TO SEND US A MESSAGE!

---

Phone: (276) 650-1583

Email: [events@popsfarmva.com](mailto:events@popsfarmva.com)

Address: 675 Hobson Road, Martinsville, Virginia 24054

Website: [www.popsfarmva.com](http://www.popsfarmva.com)